

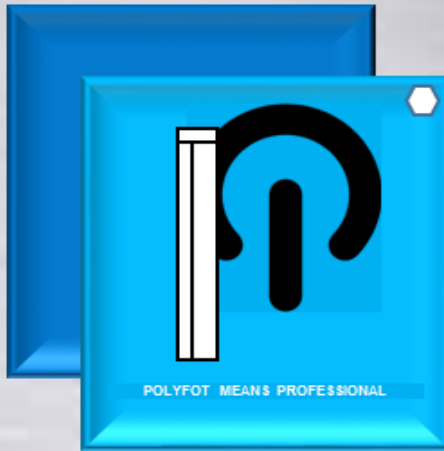
# POLYFOT

## Aluminium profiles



e catalog 2014 -15





### **Aluminium profiles for LED by POLYFOT**

**Few words for the aluminium profile applications**

**The profiles were created to provide solutions to every type of application for led strip & LED modules, for example where is difficult or impossible for correct use and installation.**

**The aluminium profile gives in the led better cooling and maximizes the life**

**As regards the plastic is from polycarbonate material and provides durability at high temperatures and in the hard conditions of the outdoor environment, and the polycarbonate cover fits perfect in the profile**

## Model / P17 MINI

**Color** - anodized aluminum and in 20 different colors on request

**Plastic cover** - polycarbonate -transparent, matt white

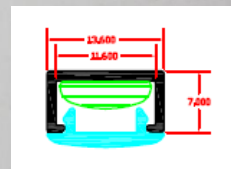
**Size** - 200cm 400cm

**Accessories** - end cap, mounting bracket.

**Applications** - P17 MINI- classrooms, corridors, stairs, kitchens, furniture, billboards, concealed lighting, lighting exhibits.

( for indoor use )

(outdoor use can be achieved)



## Model / C11

**Color** - anodized aluminum and in 20 different colors on request

**Plastic cover** - polycarbonate -transparent, matt white

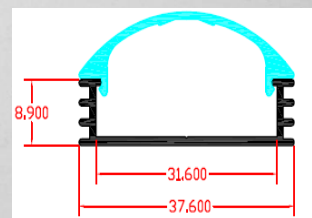
**Size** - 200cm 400cm

**Accessories** - end cap, mounting bracket.

**Applications** - C11 - classrooms, corridors, stairs, kitchens, furniture, billboards, concealed lighting, lighting exhibits.

( for indoor use )

(outdoor use can be achieved)



## Model / P17

**Color** - anodized aluminum and in 20 different colors on request

**Plastic cover** - polycarbonate-transparent, matt white

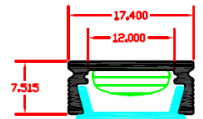
**Size** - 200cm 400cm

**Accessories** - end cap, connector, mounting bracket, mounting bracket for hanging,

**Applications** - P17- classrooms, corridors, stairs, kitchens, furniture, billboards, concealed lighting, lighting exhibits.

( for indoor use )

(outdoor use can be achieved)



## Model / PD1

**Color** - anodized aluminum and in 20 different colors on request

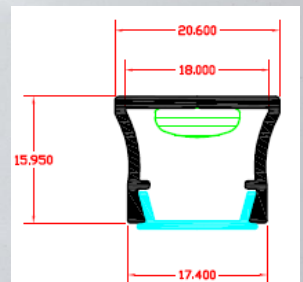
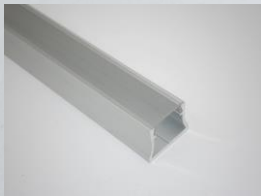
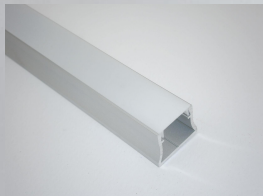
**Plastic cover** - polycarbonate-transparent, matt white

**Size**-200cm 400cm

**Accessories**- end cap, connector, mounting bracket, mounting bracket for hanging

**Applications**-PD1- furniture, billboards, concealed lighting, lighting exhibits,

(for indoors and outdoor use) (thanks to its greater width and height of the profile can easily to applied the most baggy waterproof led strip)



## Model / R27 (recessed)

**Color** - anodized aluminum and in 20 different colors on request

**Plastic cover** - polycarbonate - transparent, matt white

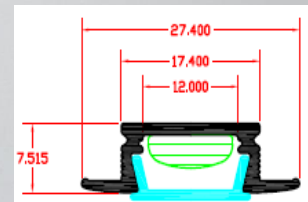
**Size** - 200cm 400cm

**Accessories** - end cap, connector

**Applications** - R27-recessed profile for application in plasterboard, mineral fiber, wood, rigips and generally where there is a need for recessed application, furniture, billboards, concealed lighting, lighting exhibits.

( for indoor use )

(outdoor use can be achieved)



## Model / RD3 (recessed)

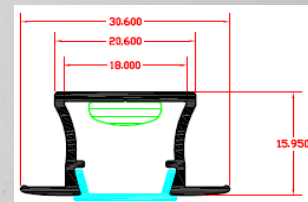
**Color** - anodized aluminum and in 20 different colors on request

**Plastic cover** - polycarbonate- transparent, matt white

**Size** - 200cm 400cm

**Accessories** - end cap, connector

**Applications** - RD3- recessed profile for plasterboard, mineral fiber, wood, rigips, and generally where there is a need for recessed application, furniture, billboards, concealed lighting, lighting exhibits ,(for indoors and outdoor use)(thanks to its greater width and height of the profile can easily to applied the most baggy waterproof led strip)



## Model / D40

**Color** - anodized aluminum and in 20 different colors on request

**Plastic cover** - polycarbonate- transparent, matt white

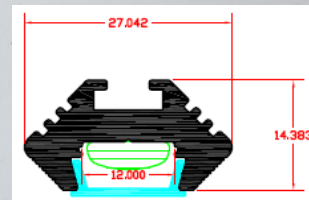
**Size** - 200cm 400cm

**Accessories** - end cap, connector, mounting bracket, mounting bracket for hanging

mounting bracket adjustable 0/45°

**Applications** – D40 - for corner applications and not only, classrooms, corridors, stairs, kitchens, furniture, billboards, concealed lighting, lighting exhibits.

( for indoor use ) (outdoor use can be achieved)



## Model / D50

**Color** - anodized aluminum and in 20 different colors on request

**Plastic cover** - polycarbonate- transparent, matt white

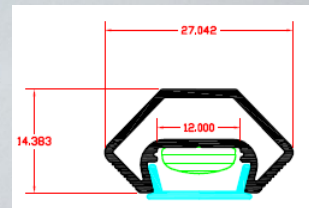
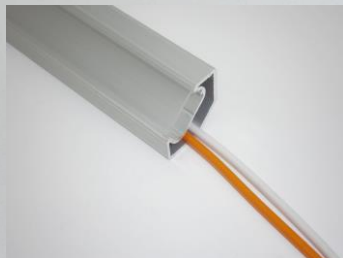
**Size** - 200cm 400cm

**Accessories** - end cap, connector, mounting bracket, mounting bracket for hanging

**Applications** – D50 - for corner applications and not only, light type profile with possibility applicability of cables through the profile,

suitable for indoor, halls, corridors, stairs, kitchens, furniture, billboards, concealed lighting, lighting exhibits

( for indoor use ) (outdoor use can be achieved)



## Model / K29

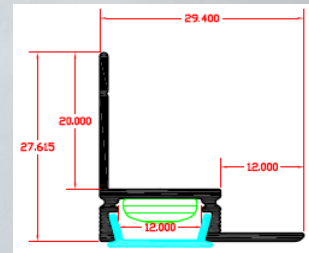
**Color** - anodized aluminum and in 20 different colors on request

**Plastic cover** - polycarbonate- transparent, matt white

**Size** - 200cm 400cm

**Accessories** - terminal plug, connector, mounting bracket

**Applications** - K29 - circumferential profile for plasterboard, rigips, and mineral fiber application ,for offices, hallways, concealed lighting, ( for indoor use ) (outdoor use can be achieved)



## Model / F44

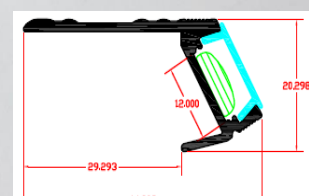
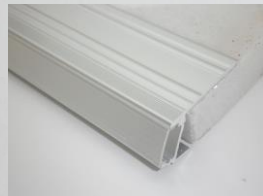
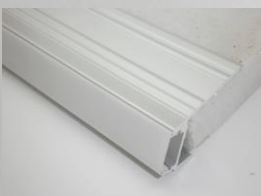
**Color** - anodized aluminum and in 20 different colors on request

**Plastic cover** polycarbonate - transparent, matt white

**Size** - 200cm 400cm

**Accessories** - terminal cap, connector.

**Applications** - F44 - profile for stairs lighting.( for indoor use ) (outdoor use can be achieved)



## Model / R73 (recessed)

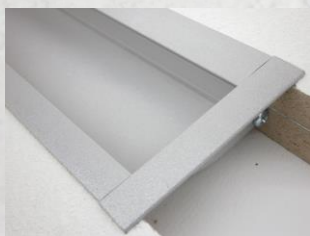
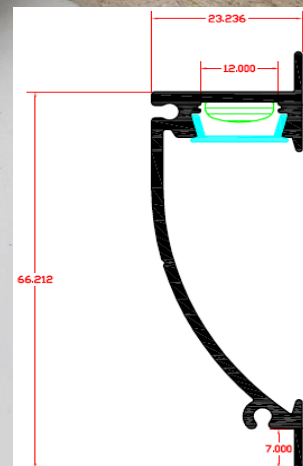
**Color** - anodized aluminum and in 20 different colors on request

**Plastic cover** - polycarbonate- transparent, matt white

**Size** - 200cm 400cm

**Accessories** - terminal cap, connector.

**Applications** - R73- recessed profile for asymmetric lighting lighting corridors, concealed lighting, lighting exhibits.  
( for indoor use )  
(outdoor use can be achieved)



## Model / M52

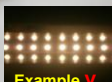
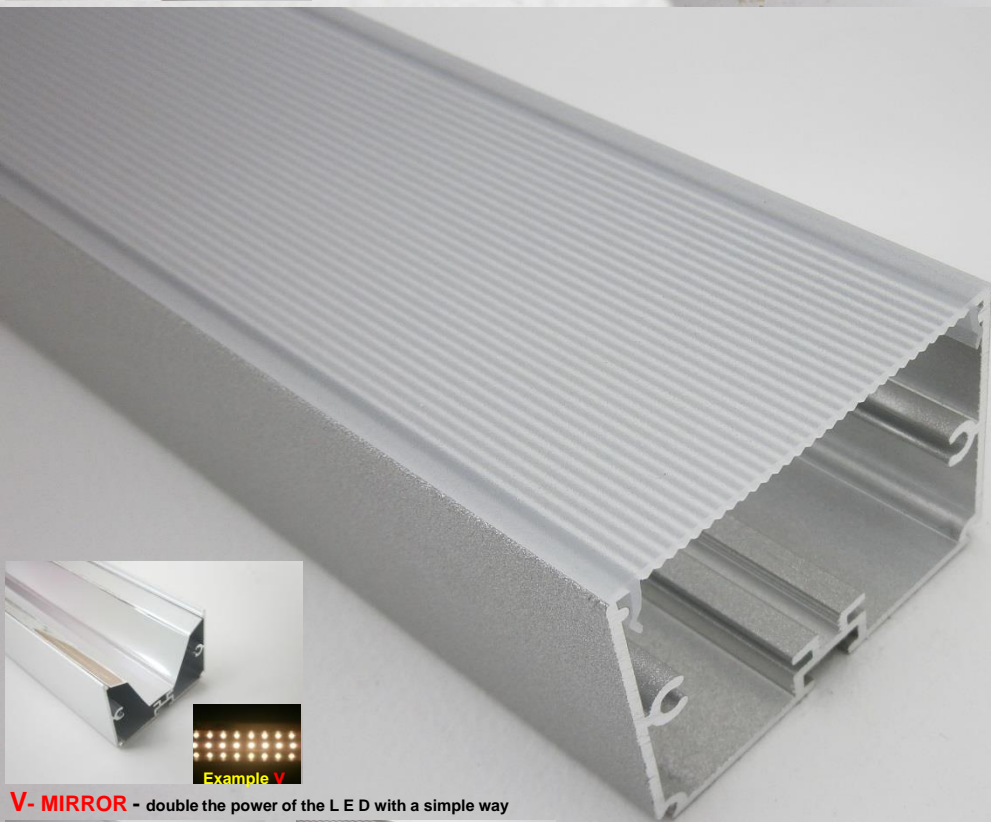
**Color** - anodized aluminum and in 20 different colors on request

**Plastic cover** - polycarbonate- transparent, matt white

**Size** - 200cm 400cm

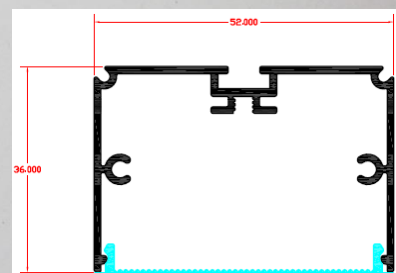
**Accessories** - end cap, connector ,mounting bracket, mounting bracket for hanging, mounting bracket adjustable 0/45°

**Applications** - M52 - for LED modules for maximum performance, for indoor lighting, office rooms, corridors, stairs, kitchens, furniture, billboards, concealed lighting, lighting exhibits.



Example V

**V- MIRROR** - double the power of the L E D with a simple way



## Model / T99

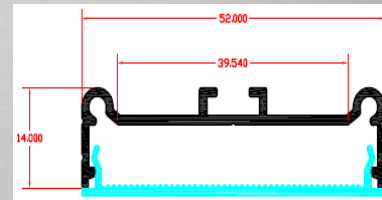
**Color** - anodized aluminum and in 20 different colors on request

**Plastic cover** - polycarbonate- transparent, matt white

**Size** - 200cm 400cm

**Accessories** - end cap, connector, mounting Bracket, mounting bracket for hanging, mounting bracket adjustable 0/45°

**Applications** - T99 - for LED strips and LED modules for maximum performance, for indoor lighting, office rooms, corridors, stairs, kitchens, furniture, billboards, concealed lighting, lighting exhibits.



## Model / S88

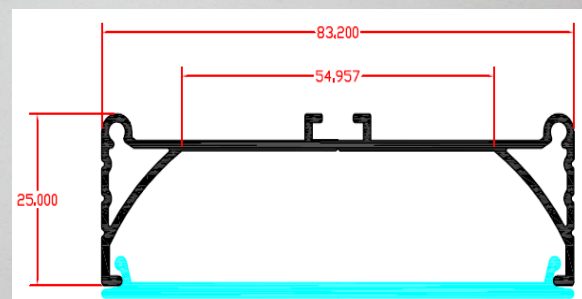
**Colour** - anodised aluminum and in 20 different colors on request

**Plastic cover**- polycarbonate- transparent, matt white

**Size** - 200cm 400cm

**Accessories** - end cap, connector, mounting bracket, mounting bracket for hanging mounting bracket adjustable 0/45°

**Applications** - S88 - for LED strips and LED modules for maximum performance, for indoor lighting, office rooms, corridors, stairs, kitchens, furniture, billboards, concealed lighting, lighting exhibits.



## Model / WP2

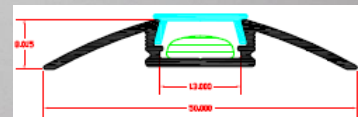
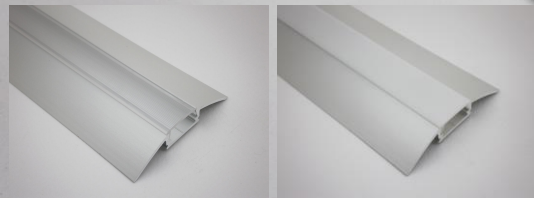
**Color** - anodized aluminum and in 20 different colors on request

**Plastic cover** - polycarbonate - transparent, matt white

**Size** - 200cm 400cm

**Accessories** - terminal cap, connector.

**Applications** - WP2 -profile for any kind of floor , for corridors, lighting exhibits,  
( for indoor use ) (outdoor use can be achieved)



## Model / WV2

**Color** - anodized aluminum and in 20 different colors on request

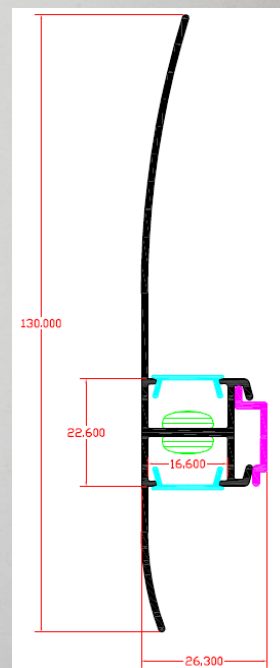
**Plastic cover** - polycarbonate transparent, matt white

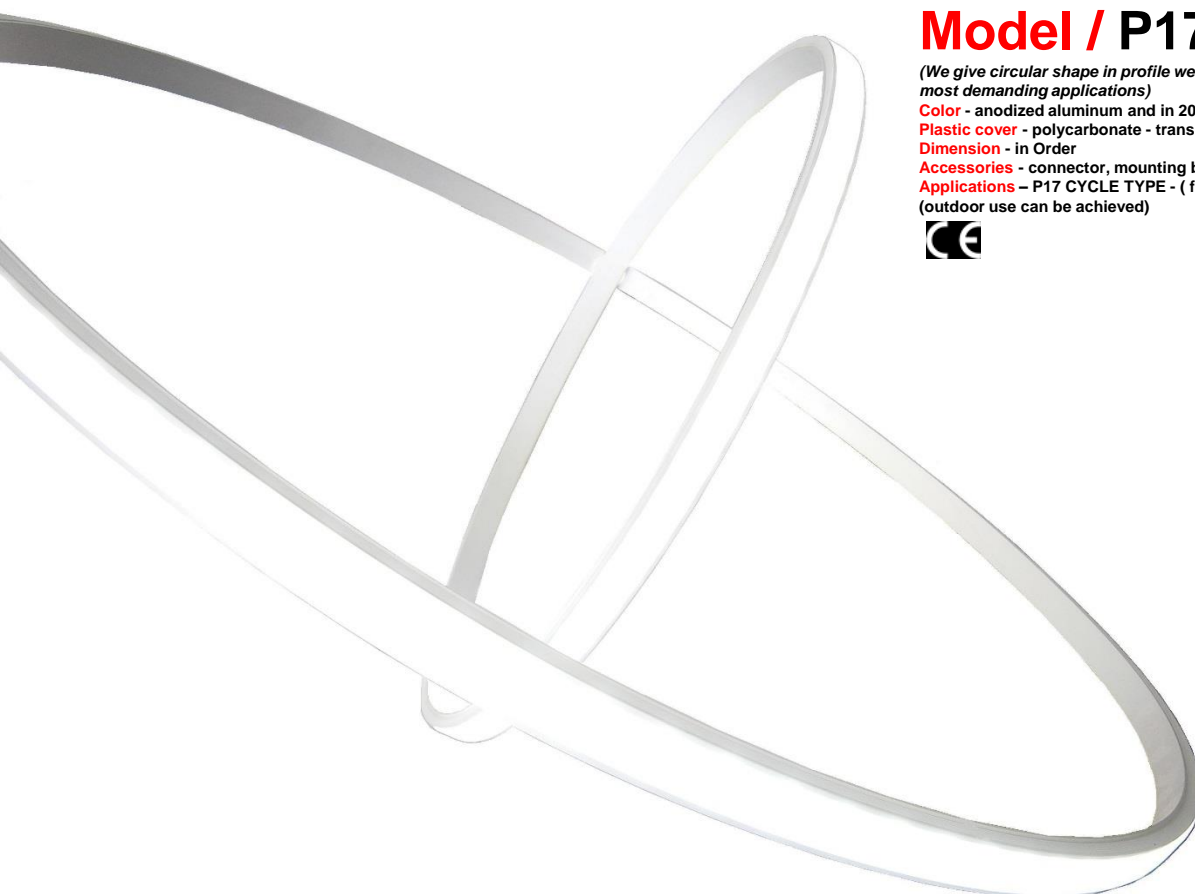
**Dimensions** - 200cm 400cm

**Accessories** - bracket

**Applications** - WV2 - profile sconce with two sockets for led strip application.

Suitable for corridor lighting, offices, reception areas.  
(outdoor use can be achieved)





## Model / P17 CYCLE TYPE

*(We give circular shape in profile we provide solutions to even the most demanding applications)*

**Color** - anodized aluminum and in 20 different colors on request

**Plastic cover** - polycarbonate - transparent, matt white

**Dimension** - in Order

**Accessories** - connector, mounting bracket

**Applications** - P17 CYCLE TYPE - ( for indoor use )  
(outdoor use can be achieved)



S edition

## Model / P17 ROLL TYPE

**Color** - anodized aluminum and in 20 different colors on request

**Plastic cover**-polycarbonate -transparent, matt white

**Size**-200cm 400cm

**Accessories** - end cap, connector, mounting bracket, mounting bracket for hanging,

**Applications**- P17 ROLL TYPE - classrooms, corridors, kitchens, furniture, billboards, concealed lighting, lighting exhibits.  
( for indoor use ) (outdoor use can be achieved)



S edition

## Model / P17 WAVE TYPE

*(We give shape and style that goes beyond the standard profile for an application that will make the difference)*

**Color** - anodized aluminum and in 20 different colors on request

**Plastic cover** - polycarbonate-transparent, matt white

**Size** - 200cm 400cm

**Accessories** - end cap, connector, mounting bracket, mounting bracket for hanging

**Applications** - P17 WAVE TYPE - classrooms, corridors, stairs, kitchens, furniture, billboards, concealed lighting, lighting exhibits.( for indoor use )  
(outdoor use can be achieved)



S edition

## Model / T99 WAVE TYPE

*(We give shape and style that goes beyond the standard profile for an application that will make the difference)*

**Color** - anodized aluminum and in 20 different colors on request

**Plastic cover** - polycarbonate-transparent, matt white

**Size** - 200cm 400cm

**Accessories** - end cap, connector, mounting bracket, mounting bracket for hanging

**Applications** - T99 WAVE TYPE - classrooms, corridors, stairs, kitchens, furniture, billboards, concealed lighting, lighting exhibits.( for indoor use )  
(outdoor use can be achieved)



S edition



Choose between twenty different colors



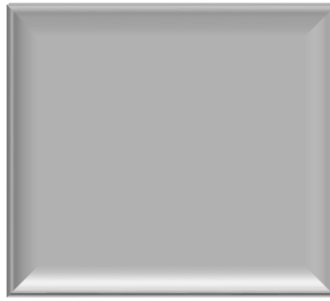
# COLORS



**brown**  
**1227**



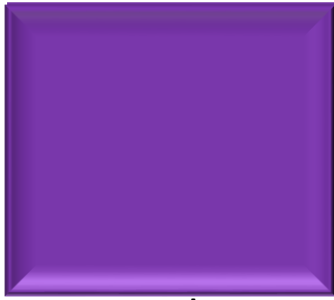
**red**  
**1221**



**grey**  
**1213**



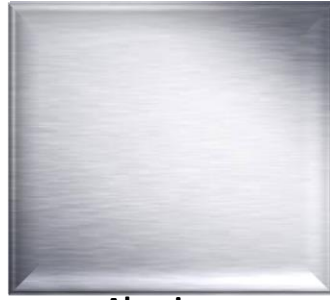
**white**  
**1201**



**purple**  
**1241**



**Hot pink**  
**1207**



**Aluminum**  
**1200**



**maroon**  
**1225**



**yellow**  
**1233**



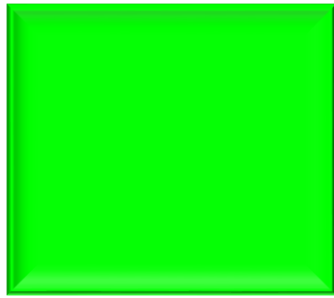
**Light pink**  
**1203**



**Forest green**  
**1223**



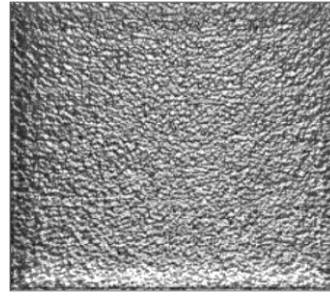
**Gold mat**  
**1235**



**green**  
**1219**



**blue**  
**1215**



**Aluminum mirror**  
**1240**



**beige**  
**1231**



**orange**  
**1209**



**Sky blue**  
**1211**



**Black**  
**1205**



**Anthracite**  
**1209**

# CARBON EDITIONS

## GLOSS



Colors shown on monitor and when printed are approximate representations of actual colors available.

## BRUSHED METAL



## CARBON FIBER



## SATIN



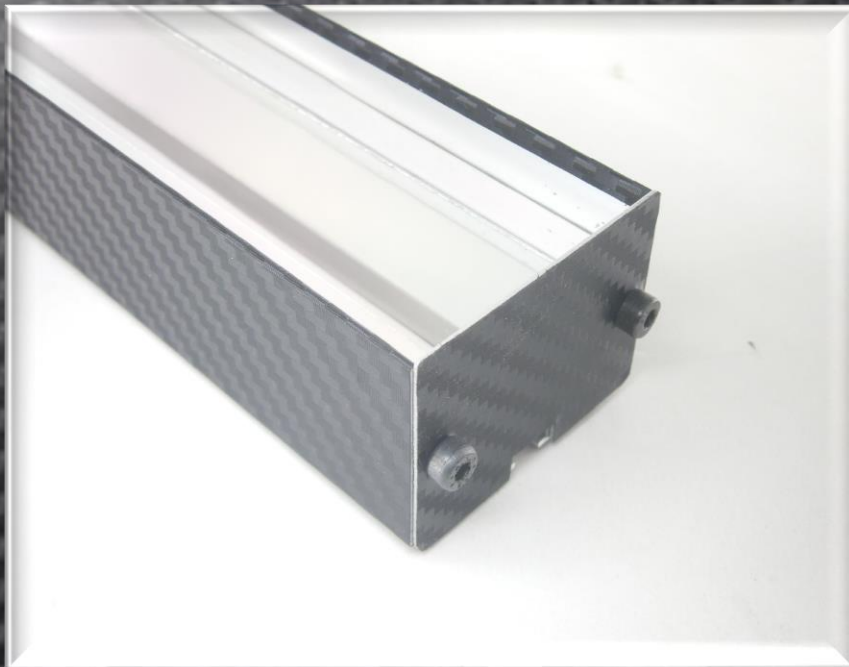
## MATTE



© 3M 2012. All rights reserved. 3M is a trademark and Scotchprint is a registered trademark of 3M Company. 75-5100-2601-8

\* Metallic

3M



This something different now is reality  
we fit the 3M film that you desire

# ACCESSORIES

And simple steps



**end cap  
P17**



**end cap  
PD1**



**end cap  
D40/D50**



**end cap  
R73**



**end cap  
M52**



**end cap  
T99**



**end cap  
S88**



**End cap  
P17 MINI**



**Connector  
M52**



**mounting  
bracket P**



**mounting  
bracket M**



**mounting bracket  
adjustable 45°**



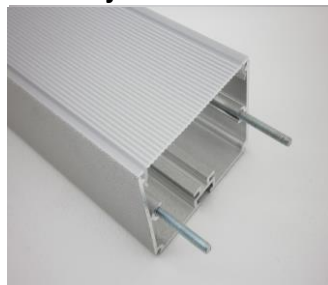
**mounting bracket  
by 3M 25X15/25X30**



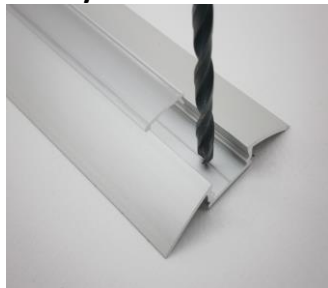
**Connector**



**Connector  
R73**



**DUAL LOCK  
SET BY 3M**



**Simply  
steps 1**



**Simply  
steps 2**



**Simply  
steps 3**



**Simply  
steps 4**

# POLYFOT

POLYFOT RESERVS THE RIGHT TO CHANGE THE  
PRODUCTS SPECIFICATION, AIMING FOR  
IMPROVEMENT, WITHOUT PRIOR NOTICE



SALES MANAGER – POLYKARPOS SOTIRIADIS  
[info@polyfot.gr](mailto:info@polyfot.gr)

**CENTRAL OFFICES : THIVON 147 - PIRAEUS - ATHENS.**  
**WAREHOUSE : MAKRIGIANNI 10 -AGIOS IOANNIS RENTI.**  
**TEL: +30 2104925460 FAX: +30 2104927600**  
**E-MAIL: [info@polyfot.gr](mailto:info@polyfot.gr)**

[www.polyfot.gr](http://www.polyfot.gr)

